

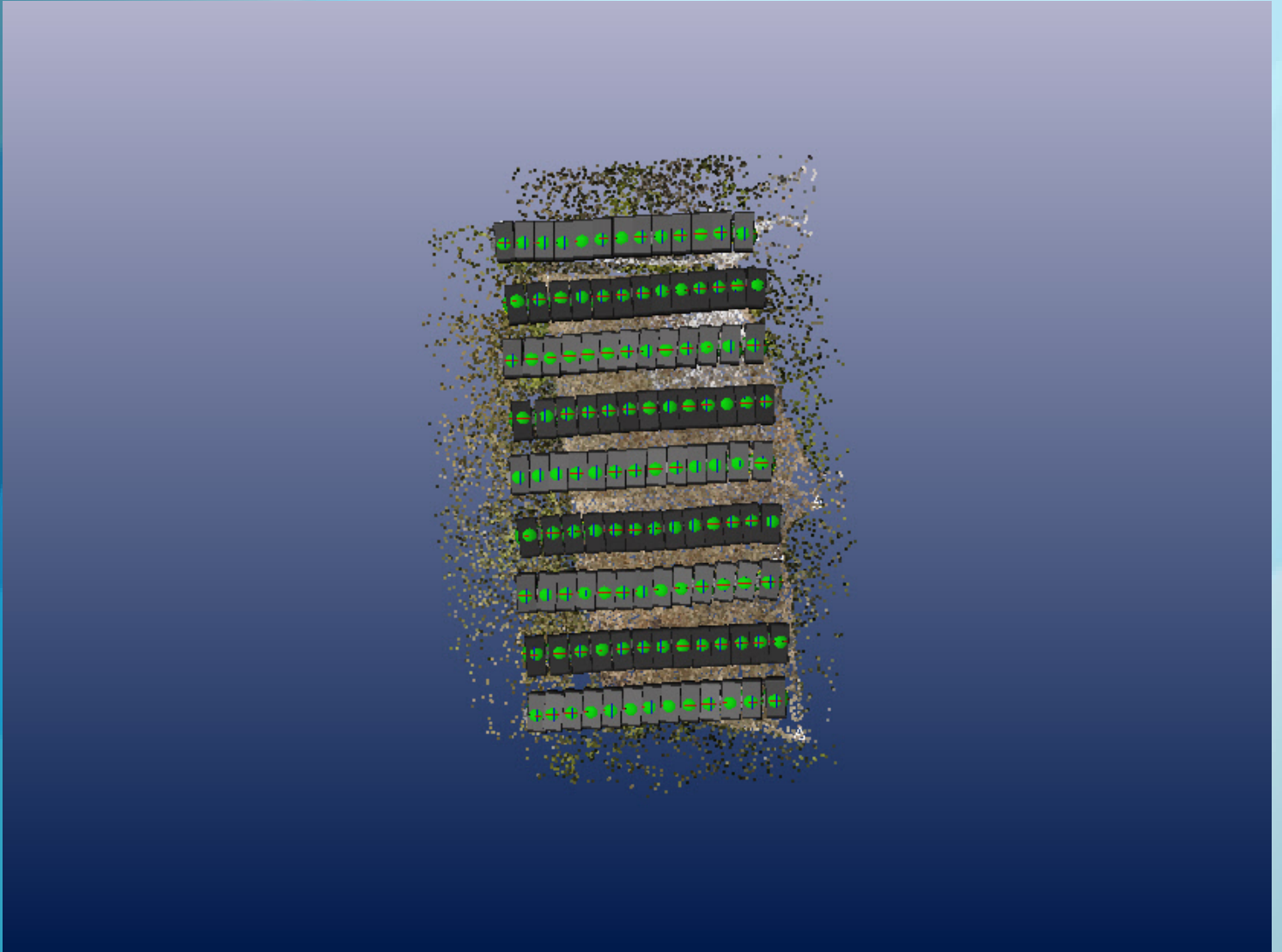
PhotoModeler Report

November 07, 2016 09:59

project: PhotoModeler GCP PPK Test.pmr

author: Eos Systems

description: Time: 00:02:09 - Photos Oriented: 117/117/117



Summary

Last Processing

Software Version: PhotoModeler UAS 2016.1.1.1955 (64-bit)

Date: Wed Oct 05 14:22:00 2016

Photo Summary

	Total	Oriented	Not Oriented
Photos	117	117	0

Point Summary

	Count	Maximum Residual	Overall RMS Residual
Manually marked	9	3.87	0.549
Sub-pixel	0	n/a	0
SmartPoints	42265	3.13	0.716

PointMesh Summary

0 points in 0 point cloud PointMeshes

0 triangles in 0 triangulated PointMeshes

Coordinate system Summary

Units: UTM - Universal Transverse Mercator- Zone 56 - Southern hemisphere (WGS84 - World Geodet...

Number of assigned and active control points: 126

Number of assigned control points: 126

Number of active control points: 127

Number of control points: 127

External check Summary

0 check distances (average delta: 0 m, 0%)

126 check points (average delta: 0.0355 m)

Description / Notes

Time: 00:02:09 - Photos Oriented: 117/117/117



Quality

Photographs

Total Number: 117

Number Oriented: 117

Cameras

Calibrated	Auto Calibrated	Field Calibrated	Inverse	Other
0	0	1	0	0

Photo coverage (percent)

Minimum: 79

Maximum: 88.4

Average: 83

Point Marking Residuals (pixels)

Minimum: 1.24e-005

Maximum: 3.87

Point ID of Max: 149

Point Marking RMS Residuals (...)

Minimum: 1.22e-005 (pt:56789)

Maximum: 2.75 (pt:72509)

Overall: 0.91

Point Angle (degrees)

Minimum: 2.82 (pt:79452)

Maximum: 73.2 (pt:23034)

Average: 25.8

Point Precisions (m)

Minimum: 0.0112 (pt:149)

Maximum: 0.491 (pt:79243)

Overall RMS: 0.135

Check distances (m)

n/a

Check points (m)

Minimum: 0.00676

Maximum: 0.0975

Average: 0.0355



Check points

Summary of all, 126 active valid check points.

	Best fit	Worst fit	Mean	RMS
Distance (m)	0.00676	0.0975	0.0355	0.0391
Delta East (m)	0.000101	0.0635	0.0201	0.0247
Delta North (m)	0.000205	0.078	0.0157	0.02
Delta Elev. (m)	0.000202	0.0884	0.0163	0.0229

Summary of PPK_Image_Positions_results_from_processing.txt:Geo-Control, 117 active valid check points.

	Best fit	Worst fit	Mean	RMS
Distance (m)	0.00676	0.0802	0.0333	0.0362
Delta East (m)	0.000101	0.0635	0.0203	0.0249
Delta North (m)	0.000205	0.078	0.0159	0.02
Delta Elev. (m)	0.000202	0.0624	0.0131	0.017

Summary of gcps.txt:Geo-Control, 9 active valid check points.

	Best fit	Worst fit	Mean	RMS
Distance (m)	0.0426	0.0975	0.0637	0.0664
Delta East (m)	0.00321	0.0389	0.0175	0.0213
Delta North (m)	0.000648	0.0451	0.0135	0.0194
Delta Elev. (m)	0.0332	0.0884	0.0574	0.0599

List of 126 active and valid check points

(Total: 127 check points: 127 active and 126 are valid)

Name	Distance (m)	Delta East. (m)	Delta North. (m)	Delta Elev. (m)
ï»¿DSC00008.JPG	0.0354	0.017	-0.031	0.0019
DSC00009.JPG	0.0156	-0.0117	-0.00754	-0.00693
DSC00010.JPG	0.0295	-0.0287	-0.00681	0.000836
DSC00011.JPG	0.0309	-0.0103	-0.0259	-0.0134
DSC00012.JPG	0.0236	0.00737	-0.0178	-0.0136
DSC00013.JPG	0.013	-0.00851	-0.00658	-0.00735
DSC00014.JPG	0.0277	0.014	-0.0211	-0.0113
DSC00015.JPG	0.0102	0.00787	-0.0061	-0.0022
DSC00016.JPG	0.0371	-0.0344	0.0138	0.000625
DSC00017.JPG	0.0411	-0.00553	0.0231	0.0335
DSC00018.JPG	0.0167	-0.016	-0.00325	0.00363
DSC00019.JPG	0.0505	0.0123	0.049	0.0017
DSC00020.JPG	0.0436	-0.0163	0.0396	-0.00857
DSC00021.JPG	0.0634	-0.00228	0.0113	-0.0624
DSC00022.JPG	0.0432	-0.0411	0.0101	-0.0089
DSC00023.JPG	0.0394	0.0328	0.0158	0.0149



Name	Distance (m)	Delta East. (m)	Delta North. (m)	Delta Elev. (m)
DSC00024.JPG	0.0323	0.00536	0.0275	0.0161
DSC00025.JPG	0.0301	0.0285	0.00817	0.00525
DSC00026.JPG	0.0399	0.0257	0.0167	0.0257
DSC00027.JPG	0.0393	-0.0382	0.00752	0.00558
DSC00028.JPG	0.0173	0.0145	-0.00875	0.00377
DSC00029.JPG	0.0483	0.0416	0.0233	0.00772
DSC00030.JPG	0.0404	-0.0385	0.0116	0.00424
DSC00031.JPG	0.0268	-0.0187	-0.0185	0.00515
DSC00032.JPG	0.0292	0.0267	0.0105	0.00529
DSC00033.JPG	0.0356	0.0215	0.016	0.0234
DSC00034.JPG	0.0621	0.0421	-0.0448	0.00888
DSC00035.JPG	0.0362	0.00325	-0.0219	0.0287
DSC00036.JPG	0.0448	0.0183	-0.0141	0.0384
DSC00037.JPG	0.027	0.0123	-0.0226	0.00825
DSC00038.JPG	0.0299	-0.0121	-0.0266	-0.00654
DSC00039.JPG	0.0362	-0.018	-0.0314	0.00126
DSC00040.JPG	0.0648	-0.0578	0.00899	0.0278
DSC00041.JPG	0.0212	-0.00756	-0.0198	0.00032
DSC00042.JPG	0.0326	-0.0294	-0.0113	0.00853
DSC00043.JPG	0.0478	-0.0409	-0.0204	-0.014
DSC00044.JPG	0.0227	-0.0102	-0.0192	-0.00664
DSC00045.JPG	0.0327	0.00734	-0.0152	-0.028
DSC00046.JPG	0.0556	-0.0374	0.0382	0.0151
DSC00047.JPG	0.0376	-0.0314	-0.0205	0.00247
DSC00048.JPG	0.0276	0.027	-0.00235	0.0055
DSC00049.JPG	0.0424	-0.0397	-0.0123	-0.0089
DSC00050.JPG	0.0186	-0.00739	0.00822	-0.015
DSC00051.JPG	0.0229	-0.0191	-0.00967	-0.00803
DSC00052.JPG	0.0356	-0.0304	0.0184	0.0029
DSC00053.JPG	0.0327	-0.0248	-0.0155	-0.0145
DSC00054.JPG	0.00898	0.00637	-0.00629	0.000711
DSC00055.JPG	0.0312	-0.0213	-0.0224	-0.00379
DSC00056.JPG	0.0258	0.000794	-0.0203	0.0159
DSC00057.JPG	0.0489	0.0252	-0.0163	0.0386
DSC00058.JPG	0.0332	-0.0134	-0.0287	0.00981
DSC00059.JPG	0.0605	0.0575	0.0186	0.00175
DSC00060.JPG	0.0695	0.0274	-0.0539	-0.0343
DSC00061.JPG	0.0405	-0.0361	-0.0183	-0.000202
DSC00062.JPG	0.0262	0.00515	-0.0241	0.00888
DSC00063.JPG	0.0177	0.000101	-0.0177	-0.000365
DSC00064.JPG	0.0159	0.00131	-0.00256	-0.0156
DSC00065.JPG	0.0208	-0.000429	0.00687	-0.0196
DSC00066.JPG	0.0284	-0.00514	0.000205	-0.028
DSC00067.JPG	0.0363	0.0175	0.0106	-0.0299
DSC00068.JPG	0.0343	-0.0222	-0.00992	-0.0243



Name	Distance (m)	Delta East. (m)	Delta North. (m)	Delta Elev. (m)
DSC00069.JPG	0.0238	0.0112	0.00999	-0.0185
DSC00070.JPG	0.00676	0.00194	0.00534	0.00366
DSC00071.JPG	0.0187	0.00524	-0.000501	-0.018
DSC00072.JPG	0.0802	-0.00248	0.078	-0.0186
DSC00073.JPG	0.073	-0.0635	-0.0164	-0.0321
DSC00074.JPG	0.0151	-0.0107	-0.00526	-0.00925
DSC00075.JPG	0.0105	-0.00739	0.00715	-0.00193
DSC00076.JPG	0.0285	-0.023	0.00169	-0.0168
DSC00077.JPG	0.0161	0.0158	0.000544	-0.0027
DSC00078.JPG	0.0324	0.00885	0.0266	-0.0162
DSC00079.JPG	0.0208	-0.00493	0.0133	-0.0152
DSC00080.JPG	0.0315	0.0226	0.0107	-0.0191
DSC00081.JPG	0.013	-0.000347	0.00284	-0.0127
DSC00082.JPG	0.0219	0.0172	-0.00415	-0.0129
DSC00083.JPG	0.0122	0.00432	0.00781	-0.00834
DSC00084.JPG	0.0426	-0.00726	0.015	0.0392
DSC00085.JPG	0.0426	-0.0322	0.0241	0.0142
DSC00086.JPG	0.0361	0.00759	-0.0307	-0.0174
DSC00087.JPG	0.0359	-0.00986	-0.0294	-0.0181
DSC00088.JPG	0.0451	-0.0438	-0.00198	0.0108
DSC00089.JPG	0.0286	-0.0239	-0.0116	-0.0106
DSC00090.JPG	0.0373	-0.0313	0.00419	-0.0198
DSC00091.JPG	0.0347	0.0154	0.000417	-0.031
DSC00092.JPG	0.0115	-0.00228	0.00267	-0.011
DSC00093.JPG	0.0354	0.0279	0.00936	-0.0195
DSC00094.JPG	0.0419	0.0278	0.0312	-0.00178
DSC00095.JPG	0.0309	0.0281	0.00059	-0.013
DSC00096.JPG	0.0287	0.000495	0.0246	-0.0146
DSC00097.JPG	0.0255	-0.0103	-0.00613	-0.0225
DSC00098.JPG	0.0562	-0.00262	0.0309	-0.0469
DSC00099.JPG	0.0506	0.033	-0.0353	-0.015
DSC00100.JPG	0.0243	0.0167	0.0176	0.00216
DSC00101.JPG	0.0483	0.0435	0.0168	0.0125
DSC00102.JPG	0.0261	-0.0102	0.0239	0.00218
DSC00103.JPG	0.0162	0.00442	0.0156	-0.00127
DSC00104.JPG	0.0635	0.0569	0.0271	0.00804
DSC00105.JPG	0.0346	0.0322	-0.00107	-0.0125
DSC00106.JPG	0.0246	0.0163	0.0141	-0.0118
DSC00107.JPG	0.0386	0.0354	0.0118	-0.00975
DSC00108.JPG	0.0526	0.0497	0.014	-0.0105
DSC00109.JPG	0.0306	0.01	0.0221	-0.0186
DSC00110.JPG	0.0246	0.0235	-0.00342	-0.00643
DSC00111.JPG	0.0356	0.0253	0.0217	-0.0126
DSC00112.JPG	0.0344	0.0327	0.00575	-0.00881
DSC00113.JPG	0.0328	-0.0184	-0.0251	-0.0104



Name	Distance (m)	Delta East. (m)	Delta North. (m)	Delta Elev. (m)
DSC00114.JPG	0.0326	-0.0165	-0.0263	-0.00974
DSC00115.JPG	0.0235	-0.00856	-0.0183	-0.0121
DSC00116.JPG	0.0337	0.0331	0.00614	-0.00111
DSC00117.JPG	0.0408	0.0362	0.00894	-0.0167
DSC00118.JPG	0.023	0.0168	0.015	-0.00479
DSC00119.JPG	0.0136	-0.0124	0.00311	0.00458
DSC00120.JPG	0.0132	-0.00515	0.0045	-0.0113
DSC00121.JPG	0.0191	-0.0144	0.00674	-0.0105
DSC00122.JPG	0.0365	-0.0347	0.000994	-0.0111
DSC00123.JPG	0.0432	-0.0292	-0.0127	0.0292
DSC00124.JPG	0.0501	0.047	0.0145	-0.00971
MP16002	0.0529	0.00451	0.00763	0.0522
MP16003	0.0869	0.0316	-0.0451	0.0673
MP16004	0.0701	0.0157	-0.00215	0.0683
MP16005	0.0496	-0.00917	-0.0262	0.0412
MP16006	0.0975	-0.0389	0.013	0.0884
MP16007	0.0495	-0.00321	-0.00657	0.0489
MP16008	0.0775	-0.0206	-0.000986	0.0747
MP16009	0.0426	-0.0064	-0.000648	0.0421
MP16010	0.0471	-0.027	0.0196	0.0332

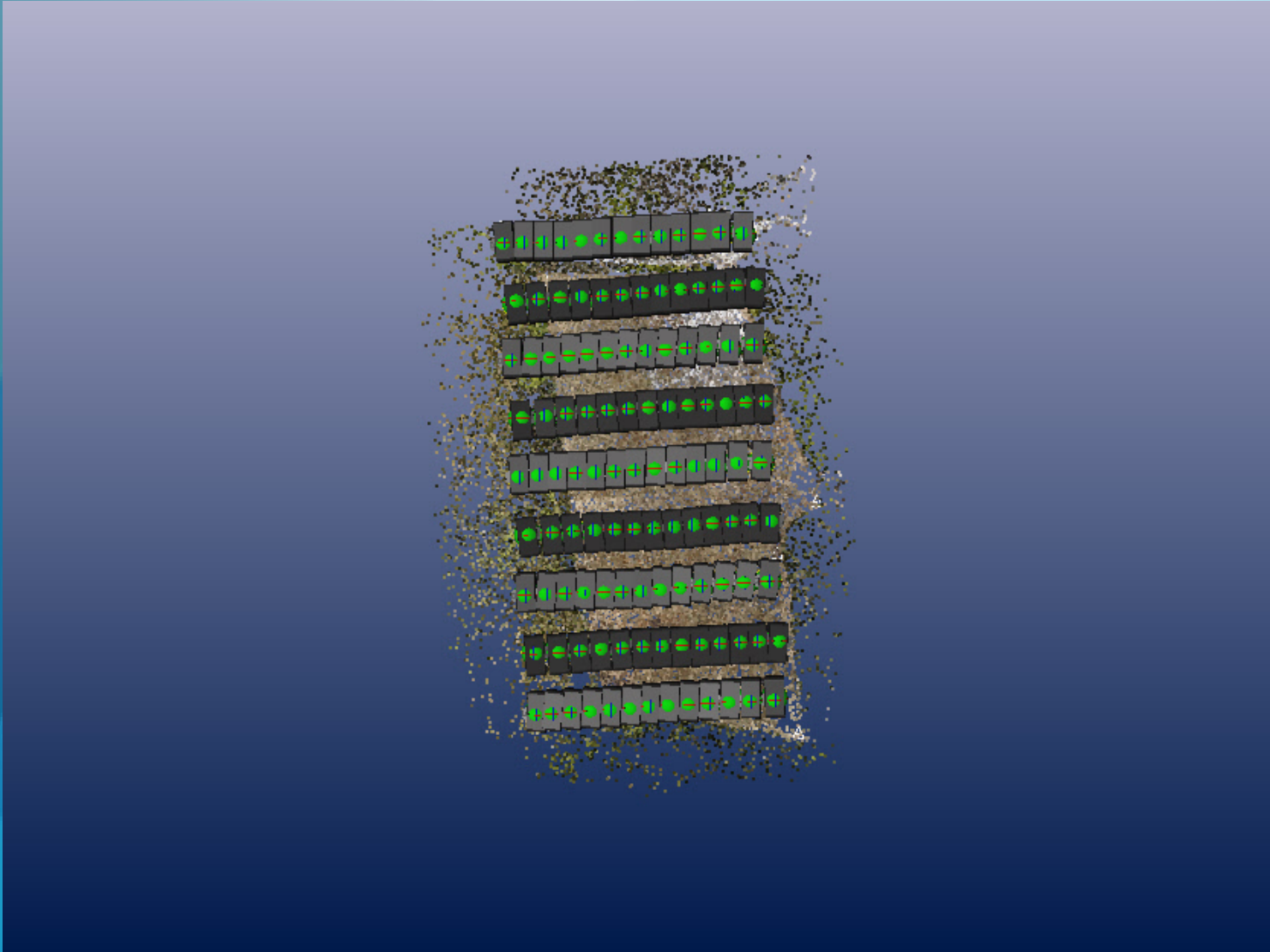


Camera [ILCE-6000 [20.00]]

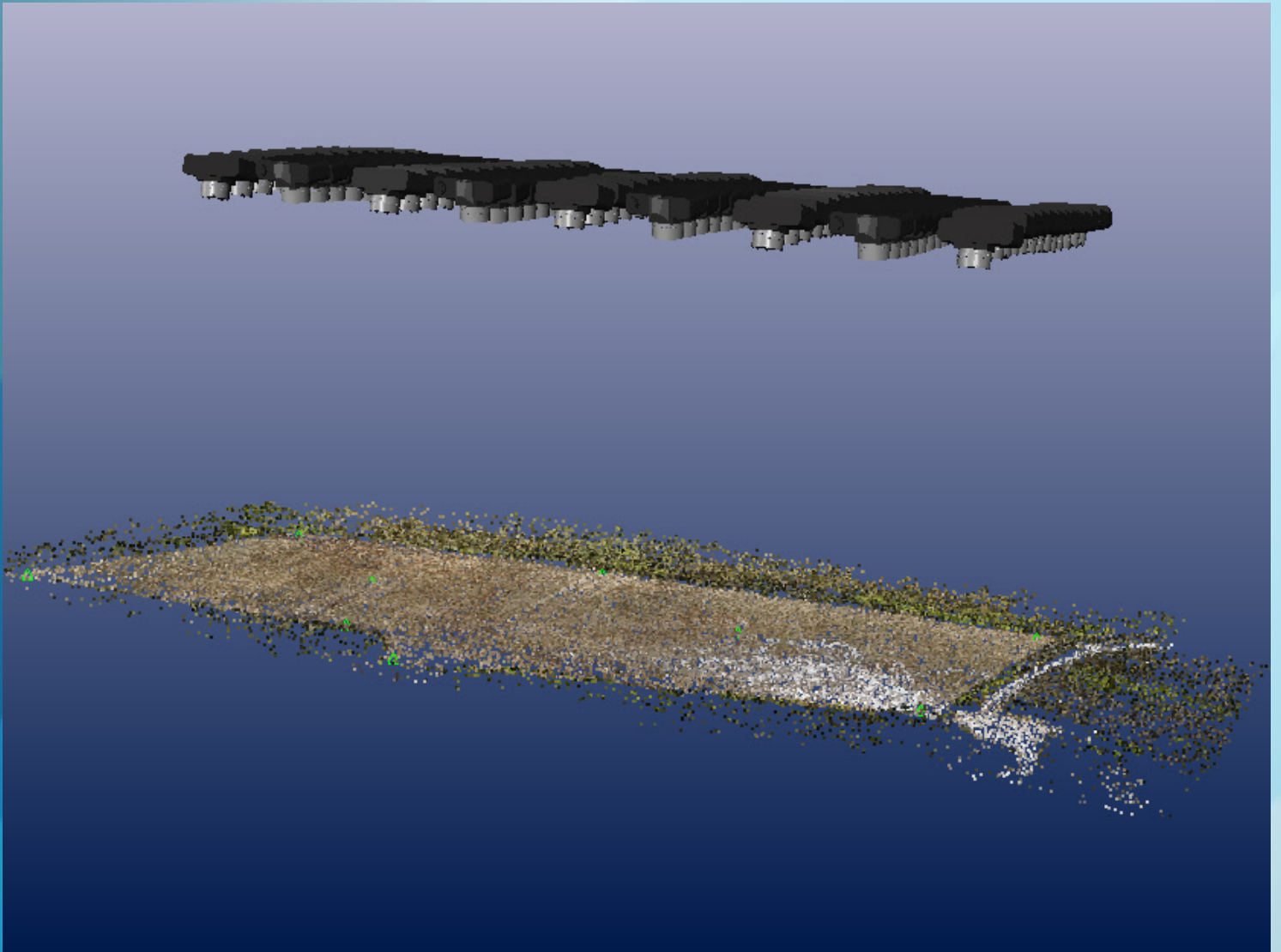
Calibration type	Field Calibration
Focal length (mm)	20.9
Image size (pixels)	6000 x 4000
Format size (mm)	24 x 16
Principal point (mm)	11.9 x 8.01
Lens distortion (K)	K1[0.000342] K2[-7.12e-008] K3[-2.64e-009]
Lens distortion (P)	P1[2.47e-006] P2[1.47e-005]
Quality - Residuals	RMS[0.91] Max[3.87]
Quality - Coverage	95.5
Multispectral	No



3D Views



3D Views #2



3D Views #3

